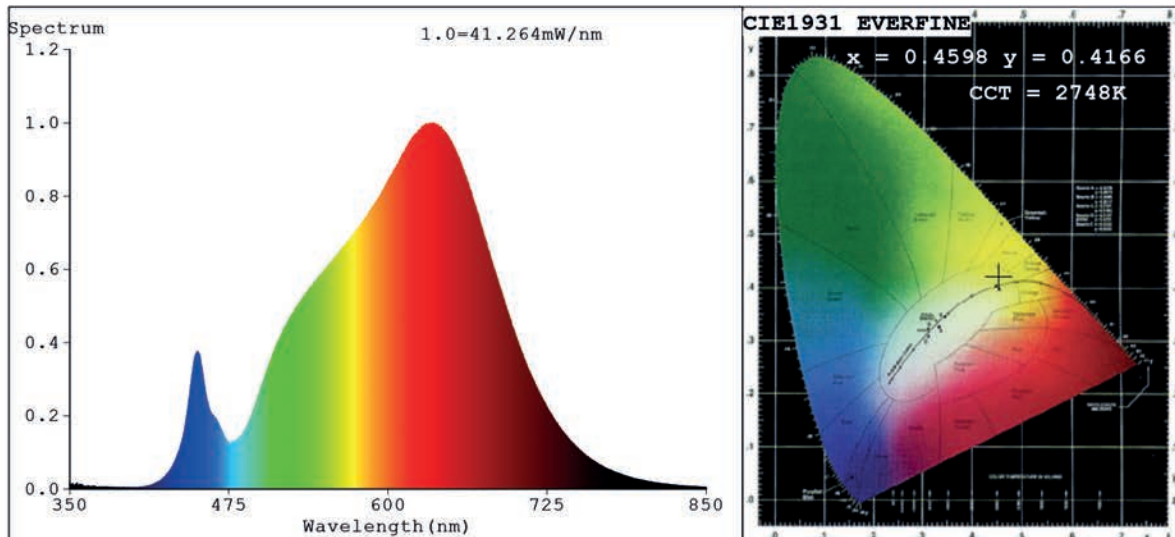


Spectrum Test Report



Color Parameters:

Chromaticity Coordinate: $x=0.4598$ $y=0.4166$ $u'=0.2598$ $v'=0.5296$
 CCT=2748K (Duv=0.0022) Dominant WL:Ld =583.3nm Purity=63.1%
 Ratio:R=25.8% G=72.2% B=2.0%; Peak WL:Lp=635.5nm FWHM=164.2nm
 Render Index:Ra=92.6 CRI=89.5 TM30:Rf=92 Rg=100
 R1 =93 R2 =94 R3 =92 R4 =94 R5 =92 R6 =91 R7 =96
 R8 =88 R9 =71 R10=84 R11=94 R12=76 R13=93 R14=95 R15=91

Photo Parameters:

Flux = 1901 lm Eff. : 84.16 lm/W Fe = 7.046 W

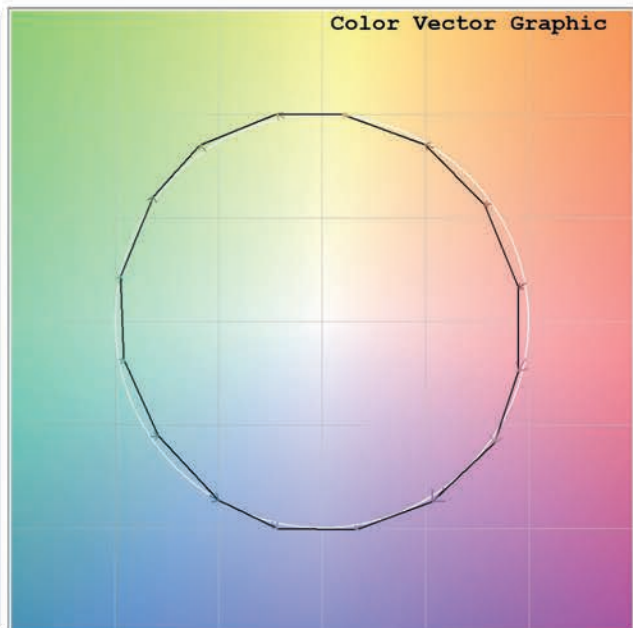
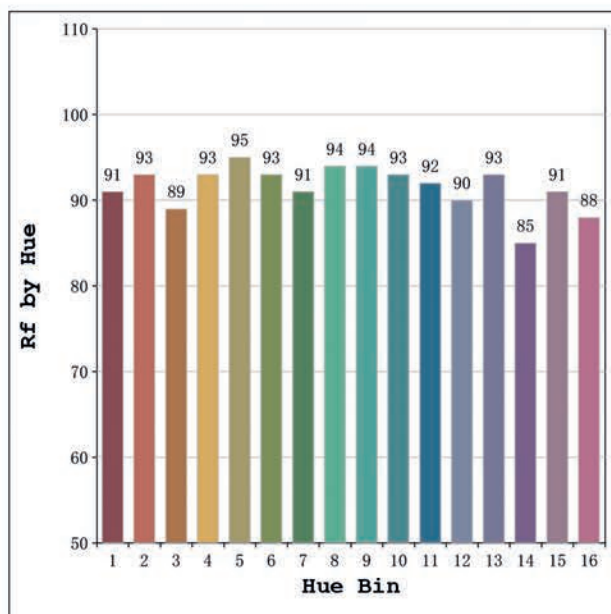
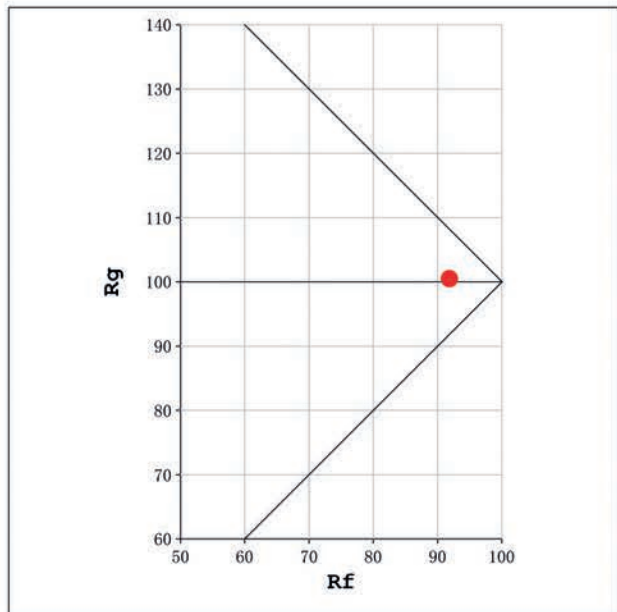
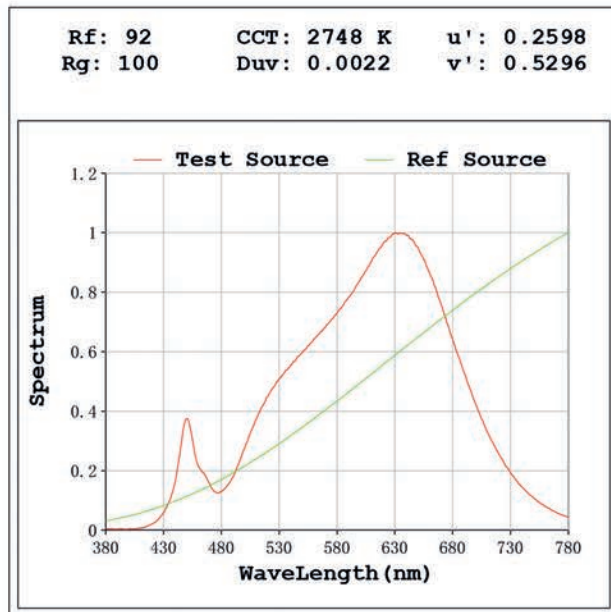
Electrical parameters:

V = 23.998 V I = 0.9411 A P = 22.58 W PF = 1.000

Status: Integral T = 687 ms Ip = 49832 (76%)

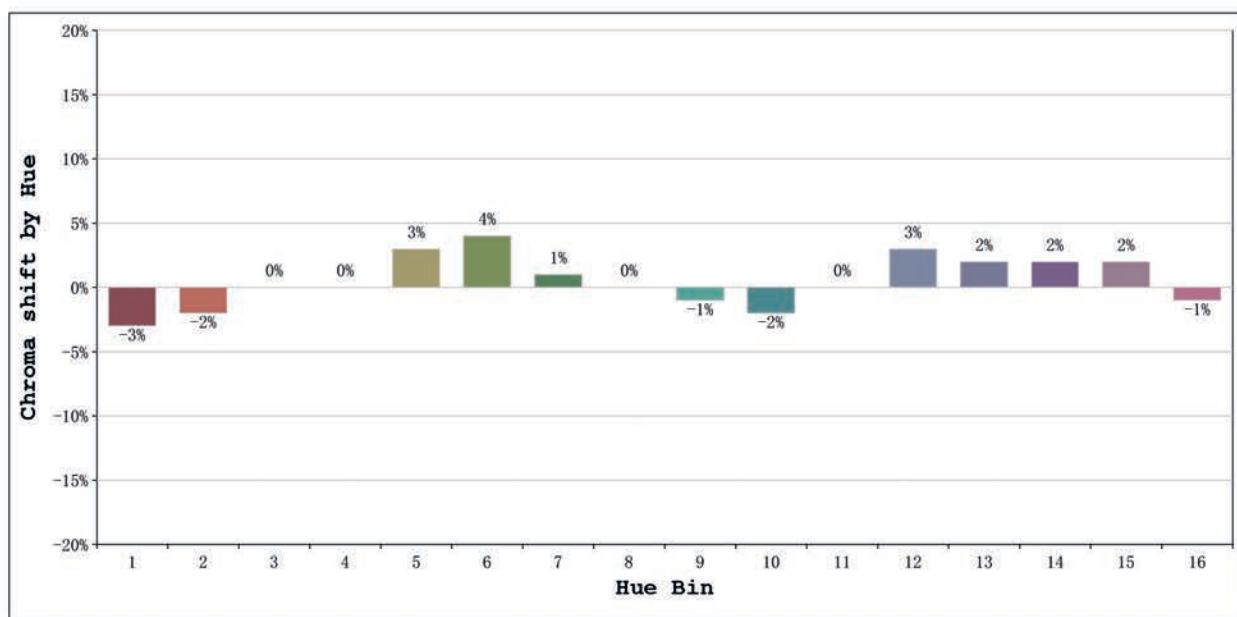
Model:Ecoled Boxled 30° 2700K
 Tester:Sergio Carneros
 Temperature:20Deg
 Manufacturer:Luz Negra

Number: 31.246
 Date:2025-06-16 13:21:22
 Humidity:50%
 Remarks:tira de 106.5cm



Model:Ecoled Boxled 30° 2700K
 Tester:Sergio Carneros
 Temperature:20Deg
 Manufacturer:Luz Negra

Number: 31.246
 Date:2025-06-16 13:21:22
 Humidity:50%
 Remarks:tira de 106.5cm



			Graphic shift(%)	
Hue Bin	Hue Angle	Rf	Chroma	Hue
1	0.0° - 22.5°	91	-3	0
2	22.5° - 45.0°	93	-2	1
3	45.0° - 67.5°	89	0	5
4	67.5° - 90.0°	93	0	3
5	90.0° - 112.5°	95	3	3
6	112.5° - 135.0°	93	4	1
7	135.0° - 157.5°	91	1	-3
8	157.5° - 180.0°	94	0	-3
9	180.0° - 202.5°	94	-1	-1
10	202.5° - 225.0°	93	-2	2
11	225.0° - 247.5°	92	0	5
12	247.5° - 270.0°	90	3	4
13	270.0° - 292.5°	93	2	-2
14	292.5° - 315.0°	85	2	-8
15	315.0° - 337.5°	91	2	-5
16	337.5° - 360.0°	88	-1	-6

Model:Ecoled Boxled 30° 2700K
 Tester:Sergio Carneros
 Temperature:20Deg
 Manufacturer:Luz Negra

Number: 31.246
 Date:2025-06-16 13:21:22
 Humidity:50%
 Remarks:tira de 106.5cm